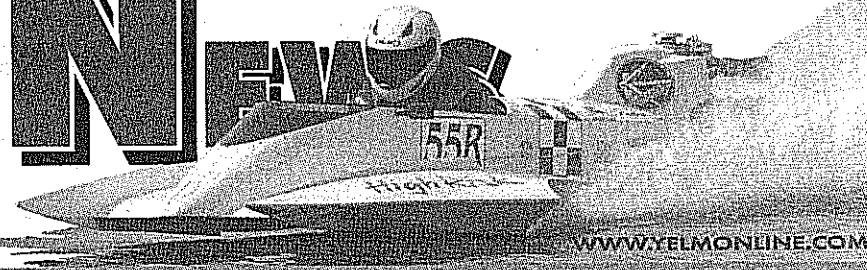


# Nisqually VALLEY NEWS

SPORTS

Covering the Nisqually Valley since 1922

FRIDAY, APRIL 10, 2009



WWW.YELMONLINE.COM

VALLEY LIFE..... B1  
 RELIGIOUS COLUMN..... B3  
 OBITUARIES ..... B3  
 MOVIE REVIEWS..... B4  
 NEWS OF RECORD..... B6  
 SUDOKU..... B6  
 SPORTS ..... C1-C2  
 LEGAL NOTICES ..... C3-C7  
 CROSSWORD PUZZLE..... C7  
 SERVICE DIRECTORY..... C8  
 CLASSIFIEDS..... C9-C10  
 REAL ESTATE..... B8, C9-C10



## Wilcox donates 109,000 eggs to local food banks

By Kelly Stonum  
*Nisqually Valley News*

Local food banks are “egg-static” over a big and timely donation from Wilcox Family Farms, of Roy.

A total of 109,356 eggs were delivered to six local food banks in time for Easter.

Wilcox Family Farms worked in conjunction with United Egg Producers to see that more than 12 million eggs donated by American farmers are delivered to food banks across the nation.

“It’s part of a drive to feed America, and at the same time, Wilcox wanted to put

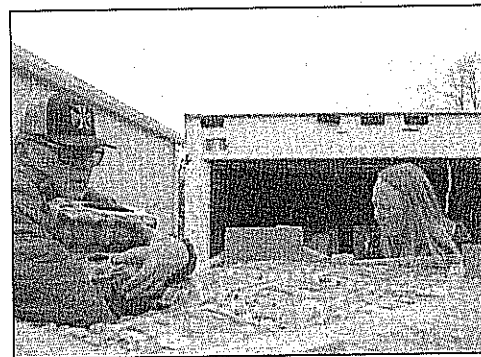


Photo by Kelly Stonum

Food bank volunteer Larry Johnson and Wilcox Farms employee Sheri Reimers count egg cartons in one pallet.

it in their own backyard and help people here who need it,” said Wilcox Marketing Director Wendi Shaw.

“Wilcox loves to be part of the community and help out.”

See **WILCOX**, A8

## WILCOX: Area food banks get egg-citing delivery

Continued from page A1

Yelm Food Bank volunteer Larry Johnson expected about 150 families to pass through the food bank line Thursday.

Each family, depending on size got one to two dozen eggs. That means at least 1,800 eggs are handed out in one day.

“Right now I have jumbo-browns and

people are saying you can’t color brown eggs,” Johnson said.

“But I tell them, ‘Yes you can, you just have to double dip them.’”

“The donation is working out great.”

Shaw said the farm is approaching its 100-year anniversary, and for a majority of those years the Wilcox family has made donations, whether through food or space for community events.

Easter and Thanksgiving are the two

times in the year that Wilcox makes its biggest donations. Amounts donated vary depending on the economy.

“We know this isn’t a huge amount, but we know it’s important for everyone to have eggs available for Easter,” Shaw said.

Not only are eggs symbolic of Easter-time, they are also a great source of protein and other nutrients.

Shaw also touts the nutritional value

of an egg.

“Eggs are so economical and so good for people — we just try to do what we can,” she said.

With the larger than normal donation Wednesday, the Yelm Food Bank was able to hand out more eggs to families than they normally would, Johnson said.

Eatonville, Olympia, Rainier, Rochester and Shelton food banks also received a portion of the donated eggs.